

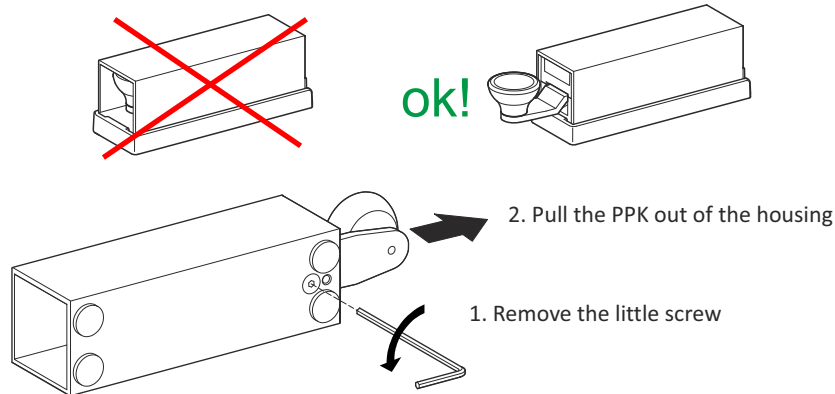
PPK Wiring information

Background:

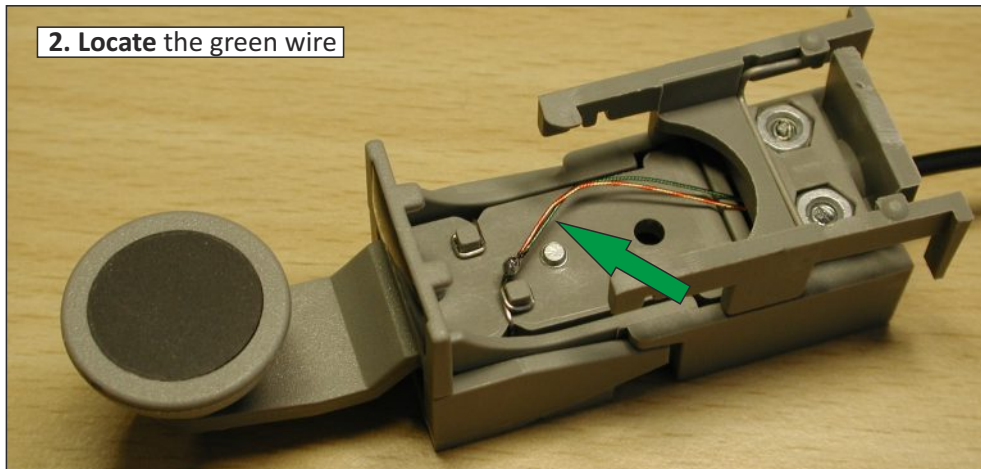
Some radios detect the connected key or paddle through an auto-detect mode. Examples are the Elecraft K2, where this feature is selectable, or the YouKits HB-1B where the auto-detect mode can not be switched off. Current PPKs are wired so the auto-detect mode on these radios will work. On some rigs this wiring can lead to a malfunction, but the PPK wiring can easily be adjusted to meet the requirements of these radios:

Radio Overview		X = CUT	✓ = PPK works OK		
K1	K2	K3	KX1/KX3	FT-817	HB-1B
X	✓ „Auto Detect“ X „INP HAND“	✓	X	✓	✓

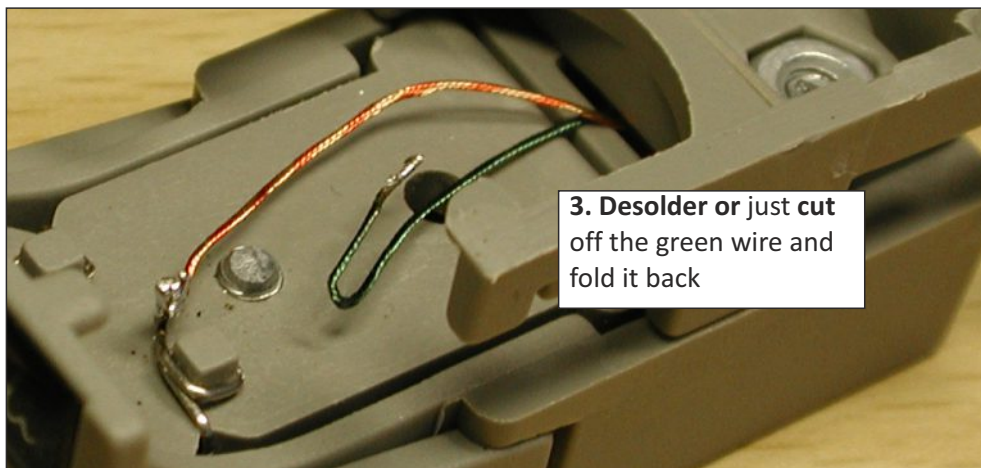
1. Open the PPK. Please note that the PPK must **not** be in the lock position



2. Locate the green wire



3. Desolder or just cut off the green wire and fold it back



4. Reassemble the PPK. Use a toothpick or a small blade to hold down the nut while you put the little screw back in.